

Rose, Thorn, Bud



What is Rose, Thorn, Bud?

It is a means to provide feedback on a session or grade research using post-its

- Rose:** a positive or strength – something that is working well or is constructive.
- Thorn:** a negative or a weakness or threat – something that isn't working or damaging.
- Bud:** has potential or opportunity – an area for progression or idea yet to be explored.



Example below of Rose, Thorn, Bud being used for comments on Idea Framer resources

The whiteboard displays several 'Idea Framer' templates, each with sections for 'Project name', 'Project stage', 'Challenge', 'Impact', and 'How does it work? include key stakeholders'. The templates are filled with handwritten notes and diagrams. The sticky notes are organized into columns and rows, providing feedback on the projects. The feedback includes comments on user experience, data sharing, and user engagement. Handwritten notes on the right side of the board provide additional context and insights into the feedback.

Rose Thorn Bud



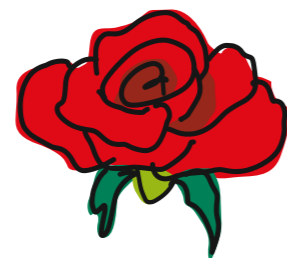
Rose: positives or strengths

Challenge: Personal Home Care

An empowered person-centred solution

I like the breadth of need this could cover

Great use of Tech that is burgeoning and maturing



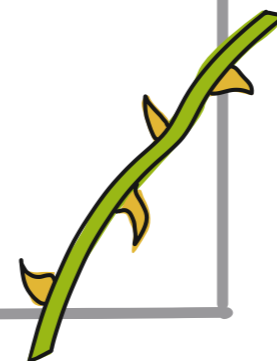
Thorn: negatives or weaknesses

Hard to personalise?

Might need different forms of communication

Reduction in human contact

Loss of 'the personal touch', for example, NHS 24



Bud: potentials or opportunities

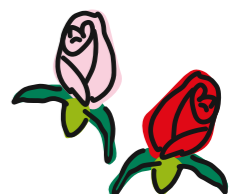
FitBit heart monitor?

Use of virtual reality?

Risk of increased intervention?

Predictive analytics to intervene before event

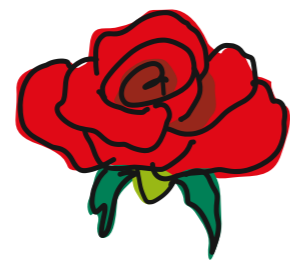
Could you sell the resultant Tech to other interested parties?



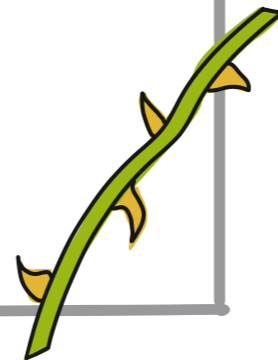
Rose Thorn Bud



Rose: positives or strengths



Thorn: negatives or weaknesses



Bud: potentials or opportunities

